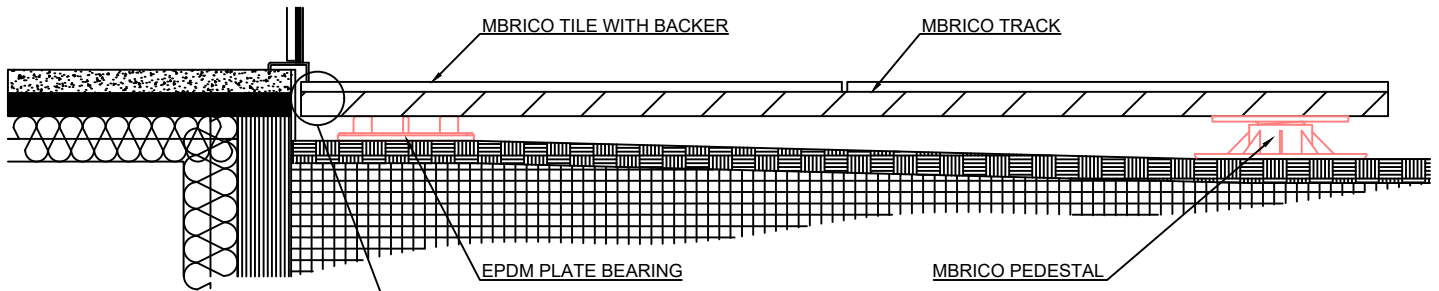


MBRICO TILE DECKS

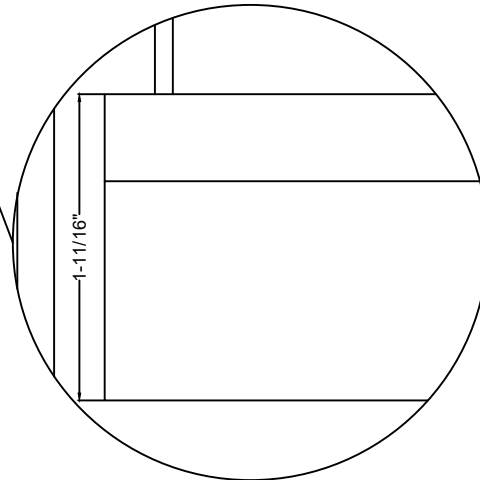
P.O. BOX 1108
BETTENDORF, IA 52722
TOLL FREE: 1-844-449-9214
WWW.MBRICOTILEDECKS.COM



MBRICO



SECTION



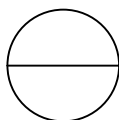
DETAIL VIEW

MANUFACTURE NORES:

- MINIMUM OVERALL HEIGHT OF 2 5/8" REQUIRED FROM TOP OF TILE TO ROOF MEMBRANE TO USE ADJUSTABLE PEDESTAL
- MINIMUM OVERALL HEIGHT OF (TILE + TRACK + EPDM PLATE BEARING) IS 1 11/16"

NOTES:

1. INSTALLATION TO BE COMPLETED IN ACCORDANCE WITH MANUFACTURER'S SPECIFICATIONS.
2. DO NOT SCALE DRAWING.
3. THIS DRAWING IS INTENDED FOR USE BY ARCHITECTS, ENGINEERS, CONTRACTORS, CONSULTANTS AND DESIGN PROFESSIONALS FOR PLANNING PURPOSES ONLY. THIS DRAWING MAY NOT BE USED FOR CONSTRUCTION.
4. ALL INFORMATION CONTAINED HEREIN WAS CURRENT AT THE TIME OF DEVELOPMENT BUT MUST BE REVIEWED AND APPROVED BY THE PRODUCT MANUFACTURER TO BE CONSIDERED ACCURATE.



MBRICO DETAIL

MBRICO: TRACK WITH EPDM TO PEDESTAL TRANSITION DETAIL